

Model

Spectrophotometer CM-M6

Illumination/viewing system	45° illumination : -15°/15°/25°/45°/75°/110° aspecular viewing angles with double-path technology
Detector	Dual 40-element silicon photodiode arrays
Spectral separation device	Linear variable filter
Wavelength range	400-700 nm
Wavelength pitch	10 nm
Measurement range	6 angles: 0-600%; Output/display resolution :0.01 %
Light source	High-CRI white LED
Measurement time	Approx. 4.5 seconds
Minimum measurement interval	Approx. 5 seconds
Battery performance	Approx. 1,500 measurements/charge (at 10-second intervals at 23°C)
Measurement/illumination area	Ø6 mm/Ø12 mm
Repeatability	Chromaticity value :Standard deviation within ΔE*ab 0.05 (When a white calibration plate is measured 30 times at 10-second intervals after white calibration)
Inter-instrument agreement	Within ΔE*ab 0.2 (Average for 12 BCRA Series II color tiles compared to values measured with a master body under Konica Minolta standard measurement conditions)
Observer	2 ° or 10 ° Standard Observer
Illuminant	A, C, D50, D65, F2, F6, F7, F8, F10, F11, F12 (simultaneous evaluation with two illuminants possible)
Displayed data	Colorimetric values, color-difference values/graph, line graph (colorimetric/color-difference values), pass/fail judgement
Colorimetric data	L*a*b*, L*C*h
Indexes	MI, FF value (Flop value)
Color-difference formula	ΔE*ab (CIE 1976), Δ(L*a*b*), Δ(L*C*H*), CMC (l:c), ΔE*94 (CIE 1994), ΔE00 (CIE DE2000), ΔE (DIN 6175)
Data memory	Target data: 200 measurements; Sample data: 800 measurements
Pass/Fail judgement	Tolerances can be set for color-difference values
Displayed languages	Japanese, English, German, French, Italian, Spanish, Chinese (Simplified), Portuguese, Russian, Turkish, Polish
Display	3.5-inch TFT color LCD
Interfaces	USB2.0, Bluetooth (Option)
Power	Rechargeable lithium-ion battery (removable), dedicated AC adapter
Charging time	Approx. 5 hours when no charge remains
Operation temperature/humidity range	0-40 °C, relative humidity is 85% or less (at 35 °C) with no condensation
Storage temperature/humidity range	-20-45 °C, relative humidity is 85% or less (at 35 °C) with no condensation
Size (W×H×D)	Approx. 152 × 239 × 81 mm
Weight	Approx. 1.1 kg (Including battery)

System Diagram

PC
(commercially available)

Standard Accessories

Optional Accessories

Color Data Software SpectraMagic DX

USB Converter for Bluetooth Module CM-A230

Bluetooth Module CM-A219*

Cable Set for Bluetooth Module CM-A225

Bluetooth Adapter (Commercially available)

Bluetooth Printer (Commercially available)

USB Cable (Commercially available)

USB Converter Cable (Commercially available)

Roll Paper (10 rolls) (Commercially available)

AC Adapter AC-A311*

USB Cable (2m) IF-A17

Lithium-Ion Battery CM-A223*

Hand Strap CM-A220

Spectrophotometer CM-M6

White Calibration Cap CM-A226

Zero Calibration Box CM-A222

Battery Charger CM-A227*

Lithium-Ion Battery (spare) CM-A223*

Hard Case CM-A221

*Not available in all areas.

KONICA MINOLTA

NEW

Spectrophotometer

CM-M6

1

High precision, multi-angle model for measuring automotive exteriors from 6 angles!

Innovative "double-path optical system" enables stable measuring even on curved surfaces!

Compact, lightweight vertical format designed for measuring vehicle exteriors!

Ø6 mm diameter viewing beam for measuring small surfaces!

SPECTROPHOTOMETER CM-M6

Sample 0001 White

10°/D65 None FF: 0.23

-15°	97.22	-0.28	-0.27
15°	98.71	-0.12	-0.15
25°	98.71	-0.08	-0.18
45°	98.89	-0.02	0.11
75°	98.49	-0.00	0.04
110°	94.81	0.01	0.18

2016/09/02 09:30:29

0001

0001

White

10°/D65 None FF: 0.23

-15°	97.22	-0.28	-0.27
15°	98.71	-0.12	-0.15
25°	98.71	-0.08	-0.18
45°	98.89	-0.02	0.11
75°	98.49	-0.00	0.04
110°	94.81	0.01	0.18

2016/09/02 09:30:29

0001

SAFETY PRECAUTIONS

! SAFETY PRECAUTIONS

For correct use and for your safety, be sure to read the instruction manual before using the instrument.

●Always connect the instrument to the specified power supply voltage. Improper connection may cause a fire or electric shock.

●Be sure to use the specified batteries. Using improper batteries may cause a fire or electric shock.

ISO 9001

Certificate No : LRQ 0960094/A

Registration Date : March 3, 1995

ISO 14001

Certificate No : JQA-E-80027

Registration Date : March 12, 1997

KONICA MINOLTA, INC.

Konica Minolta Sensing Americas, Inc.

Konica Minolta Sensing Europe B.V.

Osaka, Japan

New Jersey, U.S.A.

European Headquarter /BENELUX

German Office

French Office

UK Office

Italian Office

Swiss Office

Nordic Office

Polish Office

Turkish Office

SE Sales Division

Beijing Office

Guangzhou Office

Chongqing Office

Qingdao Office

Wuhan Office

Phone : 888-473-2656 (in USA), 201-236-4300 (outside USA)

Phone : +31 (0)30 248-1193

Phone : +49 (0)89 4357 156 0

Phone : +33 (0)1 80 11 10 70

Phone : +44 (0)1925 467300

Phone : +39 02849488.00

Phone : +41 (0)43 322-9800

Phone : +46 (0)31 7099464

Phone : +48 (0)71 73452-11

Phone : +90 (0) 216-528 56 56

Phone : +86- (0)21-5489 0202

Phone : +86- (0)10-8522 1551

Phone : +86- (0)20-3826 4220

Phone : +86- (0)23-6773 4988

Phone : +86- (0)532-8079 1871

Phone : +86- (0)27-8544 9942

Phone : +65 6563-5533

Phone : +82 (0)2-523-9726

Fax : 201-785-2482

Fax : +31 (0)30 24 81 211

Fax : +49 (0)89 4357 156 99

Fax : +33 (0)1 80 11 10 82

Fax : +44 (0)1925 711143

Fax : +39 02849488.30

Fax : +41 (0)43 322-9809

Fax : +48 (0)71 734 52 10

Fax : +90 (0) 212-253 49 69

Fax : +86- (0)21-5489 0005

Fax : +86- (0)10-8522 1241

Fax : +86- (0)20-3826 4223

Fax : +86- (0)23-6773 4799

Fax : +86- (0)532-8079 1873

Fax : +86- (0)27-8544 9991

Fax : +65 6560-9721

Fax : +82 (0)31-995-6511

Konica Minolta (CHINA) Investment Ltd.

Addresses and telephone/fax numbers are subject to change without notice. For the latest contact information, please refer to the KONICA MINOLTA Worldwide Offices web page :

Konica Minolta Sensing Singapore Pte Ltd.

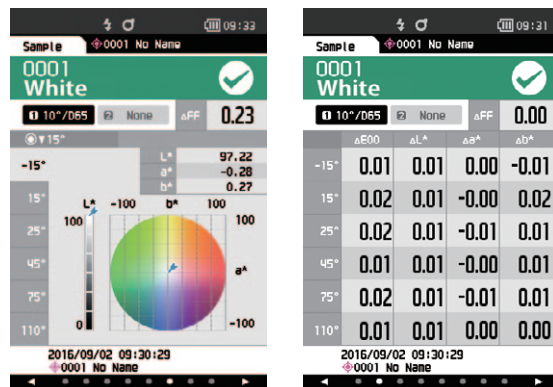
Konica Minolta Sensing Korea Co., Ltd.

Addresses and telephone/fax numbers are subject to change without notice. For the latest contact information, please refer to the KONICA MINOLTA Worldwide Offices web page :

©2016 KONICA MINOLTA, INC.

9242-4843-20 BGLPK Printed in Japan

Display examples

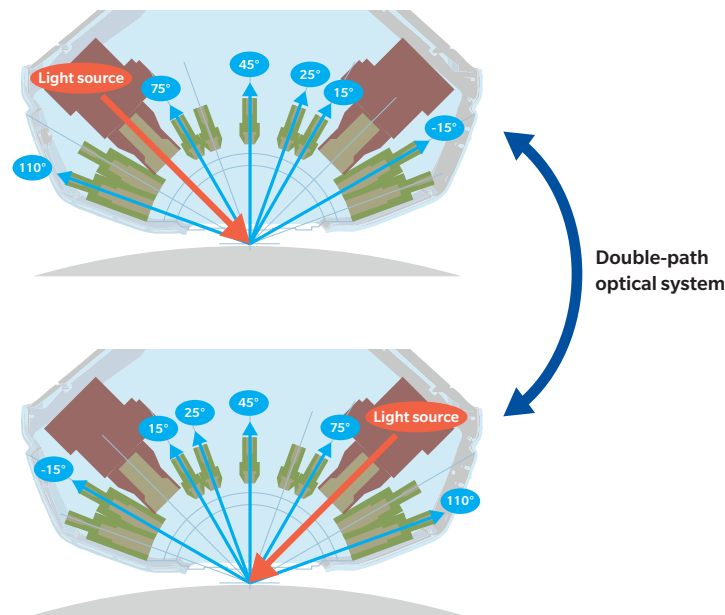


The CM-M6 has a built-in 3.5-inch color LCD that can display measured values both numerically and on colored graphs, for easier visualization of results.

The CM-M6 is a compact, lightweight, multi-angle spectrophotometer. Incorporating a new patented 'double-path optical system', it exhibits outstanding versatility in measuring automotive exteriors.



Multi-angle measurements (1 light source, 6 viewing angles)



Illumination angle: 45°

Aspecular viewing angles: -15°, 15°, 25°, 45°, 75°, 110°

* These 6 viewing angles make it possible to detect metallic and pearl colors with higher accuracy than previous spectrophotometers.

Double-path optical system

The CM-M6 has duplicate illumination/viewing systems symmetrical about its center axis. This system ensures high measuring stability even when the colorimeter is slightly tilted and makes it possible to stably measure R300 curved surfaces like side mirrors.

Compact, lightweight, vertical format



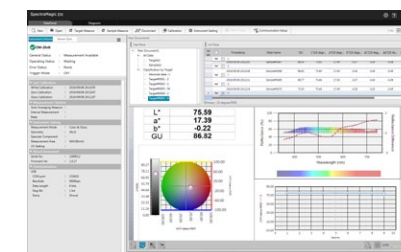
The compact body (with hand strap) can be stably held with one or two hands. Moreover, it is loaded with features ideal for measuring vehicle exteriors such as a rubber cover around the measurement aperture to safeguard measurement subjects against scratching and Bluetooth® support (option) for sending measurement data to remote devices over wireless connections.

Ø6 mm diameter viewing beam for measuring small surfaces



The viewing beam is 6 mm in diameter, so small surfaces that were hard to measure with earlier models can be stably measured.

Color Data Software SpectraMagic DX (Option) Professional Edition Lite Edition (Version. 1.0)



The new Color Data Software SpectraMagic DX enables easy management of data measured with the CM-M6, and offers a new Instrument Diagnosis function to help ensure continued high instrument performance.

OS	: Windows® 7 Pro 32-bit / 64-bit, Windows® 8.1 Pro 32-bit / 64-bit, Windows® 10 Pro 32-bit / 64-bit
CPU	: Intel® Core i5 2.7GHz or higher (recommended)
Memory	: At least 2 GB (4 GB or more recommended)
Hard disk	: 20 GB of available hard disk space At least 10 GB of available disk space is required on the system drive (drive where the OS is installed) for database.
Display	: Display hardware capable of displaying 1,280 x 768 pixels/16-bit color or better
Other	: Two USB ports required for protection key if used. Not necessary for electronic license. USB or serial port required for connection to instrument.
Compatible Instruments	: CM-25cG, CM-M6, CM-2500c

• Windows® is a trademark or registered trademark of Microsoft Corporation in the USA and other countries.
• Intel® Core is a trademark or registered trademark of Intel Corporation in the USA and other countries.